



Technical Service Bulletin

Clutch Pedal Noises

Some 2005 – 2023 model year Tacoma vehicles equipped with a manual transmission may exhibit a squeak or creak noise from the clutch pedal when it is depressed or released.

1. Confirm the condition.

Is there a squeak or creak noise from the clutch pedal when it is depressed or released?

- YES — Continue to step 2.
- NO — This bulletin does NOT apply. Continue diagnosis using the applicable repair manual

Squeals and growls: Typically indicative of worn or seized release or pilot bearings.

Chirping: Caused by vibrations in the actuator system, usually stemming from worn contact points on the clutch ball/ball stud interface.

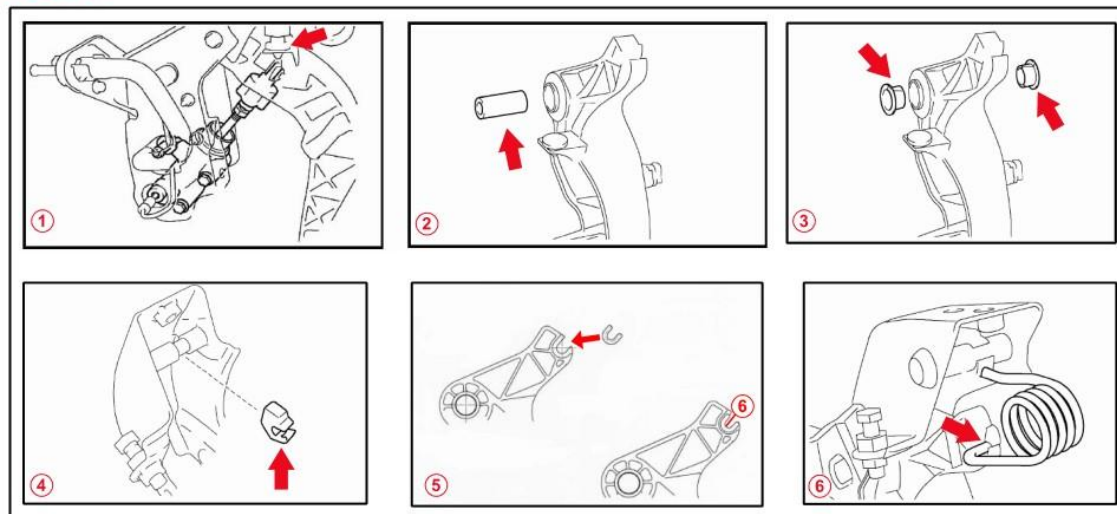
Rattling: Usually signaling issues requiring attention with a dual mass flywheel. In the case of a solid flywheel, it may point to clutch disc damper failure.

2. Replace the clutch pedal sub-assembly, clutch master cylinder assembly, and the clutch master cylinder hose

Note:

- Apply body grease 08887-02007 where the clutch master cylinder clevis and clutch pedal meet (see callout 1).
- Apply Multi-Purpose grease to the shaft collar and turnover spring contact surfaces as shown in the Repair Manual (see callouts 2 – 6)

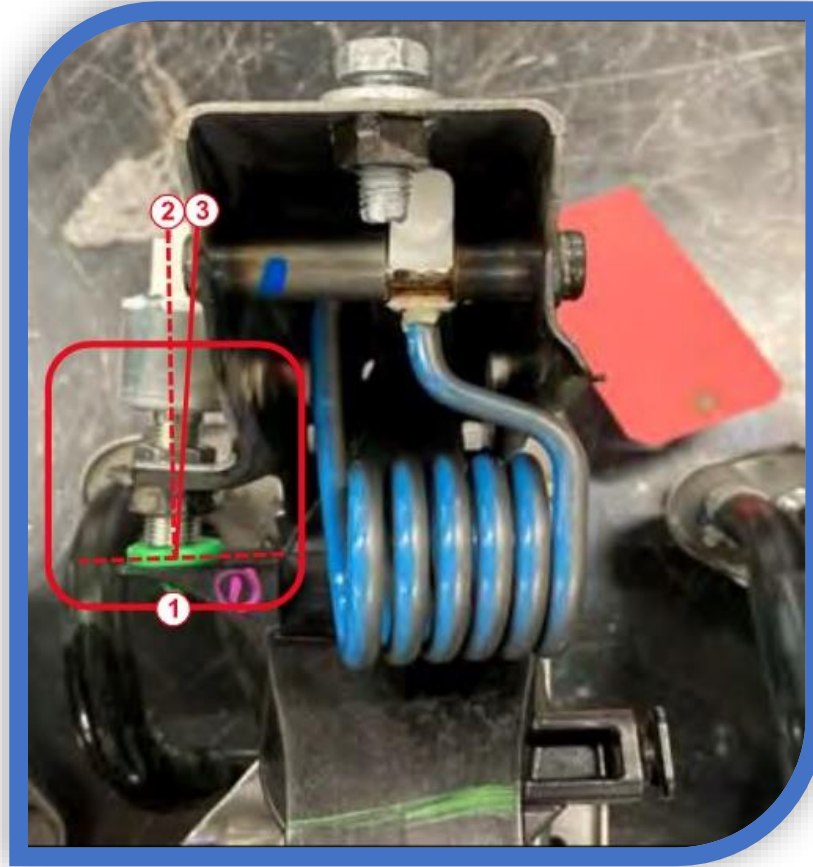
Figure 1.



1	Apply Body Grease W Where the Clutch Master Cylinder and Clutch Pedal Meet
2	Apply MP Grease to Clutch Pedal Shaft Collar
3	Apply MP Grease to the Two Bushings
4	Apply MP Grease to Clutch Pedal Spring Holder and Clutch Pedal Support

5	Install Bushing on Clutch Pedal Sub-assembly Compression Spring Insert
6	Apply MP Grease to Clutch Pedal Sub-assembly and Compression Spring

- 3. Inspect the clutch pedal bracket assembly for ANY deformations. Replace the clutch pedal bracket if necessary**



1	Deformation Area
2	Normal Position
3	Position After Deformation

- 4. Adjust the pedal height, free play, and release point**

Note:

- Ensure proper adjustment of the clutch pedal; if NOT done correctly, then the noise could occur even with new parts

- 5. Test-drive the vehicle to confirm the condition no longer exists**

For additional information regarding the above issue, please refer to Toyota TSB # T-SB-0112-19